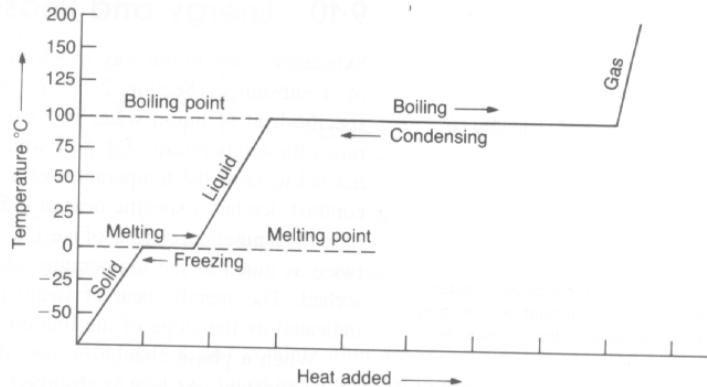


**General Chemistry**  
**Mr. MacGillivray**  
**Quiz #29:**  
**Heating and Cooling Curves**



**Fig. 1. Heating and cooling curve for water.**

1. How does the temperature of water change during the freezing of water?
2. How does the temperature of water change during the boiling of water?
3. How much energy is needed to heat 10.0 g of water from 10.0 degrees C to 35.0 degrees C?
4. How much energy is needed to melt 10.0 g of ice at its melting point?
5. How much energy is needed to boil 10.0 g of water at its boiling point?
6. **If** you were to calculate how much energy is needed to turn ice at  $-10.0$  degrees C into steam at  $110.0$  degrees Celsius, how many steps would there be in the calculation? What are those steps? (No need to actually do any of the actual calculations.)

Step #

Description of this calculation