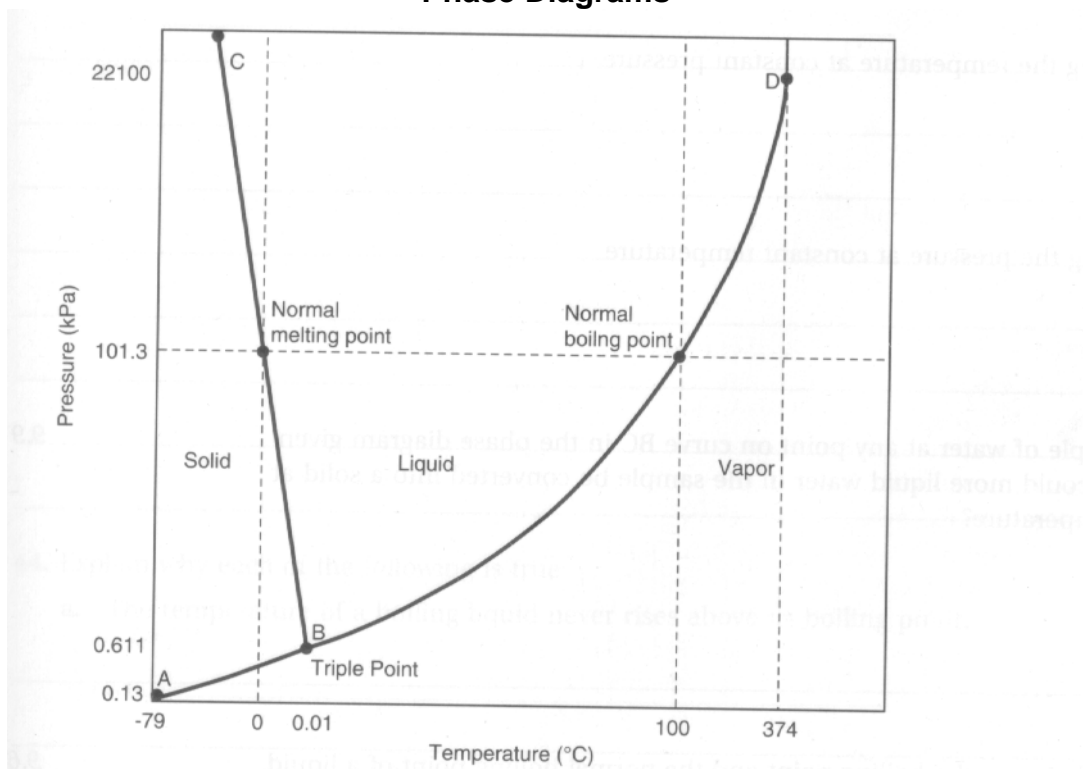


General Chemistry
Mr. MacGillivray
Quiz #28:
Phase Diagrams



1. Given the phase diagram for water (illustrated above) state what phase(s) of water is/are present at each of the following temperature-pressure conditions:

- a) at any point on curve AB
- b) at any point on curve BD
- c) at any point on curve BC
- d) at point B

2. Based on the phase diagram from the previous question, what effect would each of the following changes have on a sample of water at any point on curve BD:

- a) increasing the temperature at constant pressure
- b) decreasing the pressure at constant temperature
- c) decreasing the temperature at constant pressure
- d) increasing the pressure at constant temperature

3. Given a sample of water at any point on curve BC in the phase diagram given above, how could more liquid water in the sample be converted into a solid at room temperature?